

Project BRIEF

I-94 North-South Freeway Project information

County K Crossroad (Racine County) Reconstruction

The Wisconsin Department of Transportation (WisDOT) is well underway with reconstructing County K Crossroad in Racine County.

Please note that all construction is weather dependent and subject to change.

Listed below are upcoming construction activities on County K.

County K east traffic switch:

- County K traffic (east of I-94 North-South) is scheduled to be shifted early Wednesday, October 25, to the newly constructed westbound lanes while crews reconstruct the eastbound lanes.

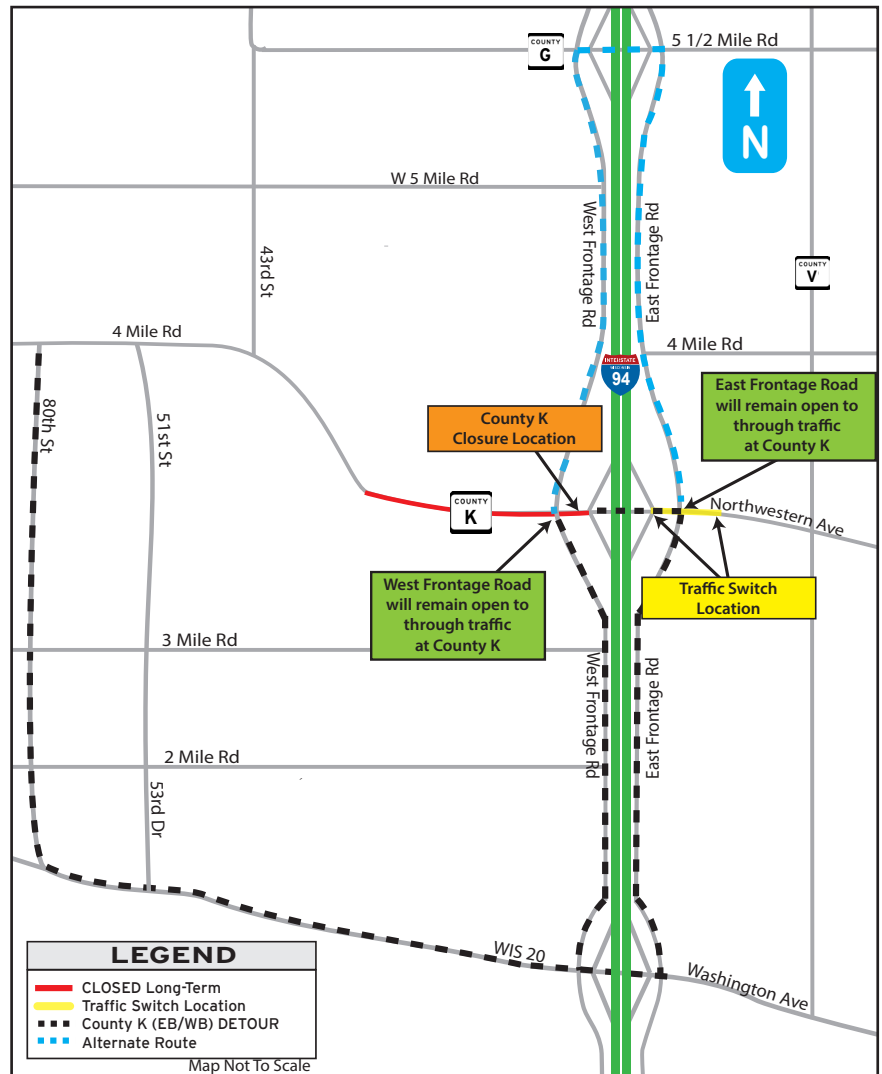
One lane of traffic will be maintained in each direction.

County K west long-term closure:

- County K, just west of I-94 EAST (SB) exit ramp is scheduled to close early morning Wednesday, October 25 while crews reconstruct the roadway. County K west is scheduled to reopen early winter.

Detour Route: Motorists are encouraged to use County K east to East Frontage Road and take East Frontage Road south to WIS 20. Continue on WIS 20 west to 80th Street and take 80th Street north to County K to get around the closure. (See map for details)

East and West Frontage Roads will remain open to through traffic at County K.



The project team thanks you for your patience and cooperation throughout this project!

For general project information or to receive project updates

County K Crossroad Public Involvement Lead: Cynthia De Vor
 Cell: (262) 510-8901
 Cynthia@devorpr.com



Find us online at:
Plan94.org



Find us on Facebook at:
Wisconsin Plan 94



Find us on Twitter at:
@WisconsinPlan94



Plan Ahead, Drive Safely, Move Forward